



18-4-2017

# Advanced PortChecker

Help documentation



DeadLine  
CODEDEAD

## Table of contents

1.	Introduction.....	2
1.2	Notes.....	2
2.	System requirements.....	2
3.	License.....	2
4.	Support.....	2
5.	Website.....	2
6.	General warning.....	3
7.	General functionality.....	4
7.2	Settings.....	4
8.	F.A.Q.....	5
8.2	I am unable to open the application, what could be wrong?.....	5
8.3	The application crashed, what can I do?.....	5
8.4	How much does Advanced PortChecker cost?.....	5
8.5	Where can I download Advanced PortChecker?.....	5
8.6	How can I contact the developers if I have a question or need support?.....	5
8.7	Can I take a look at the source code behind Advanced PortChecker?.....	5
8.8	Why does my antivirus warn me about Advanced PortChecker?.....	5

## 1. Introduction

Advanced PortChecker was created by DeadLine. This software can be used to determine whether a certain TCP/IP port is open for connections. This software was and will always be, available free of charge. This software is not intended for malicious use. Make sure that you have permission before scanning a certain IP address!

### 1.2 Notes

All images used by DeadLock were created by:

paomedia – Small & Flat

<https://github.com/paomedia>

The theme was created by Syncfusion:

<https://www.syncfusion.com/>

## 2. System requirements

<b>Operating System</b>	Windows 10, Windows 7 Service Pack 1, Windows 8.1, Windows Server 2008 R2 SP1, Windows Server 2012, Windows Server 2012 R2
<b>Disk space</b>	At least 20 MB disk space
<b>RAM Memory</b>	At least 80 MB RAM memory
<b>Internet connection</b>	Required in order to check for updates. This function can be turned off.
<b>.NET Framework</b>	.NET Framework v4.7

## 3. License

[Advanced PortChecker is licensed under the GNU GENERAL PUBLIC LICENSE.](#)

## 4. Support

If you need support, feel free to fill out the contact form on our website:

[http://codedead.com/?page\\_id=145](http://codedead.com/?page_id=145)

Please add a screenshot of your issue if possible.

## 5. Website

You can find us on the web by clicking on the link below:

<http://codedead.com>

## 6. General warning

Advanced PortChecker can be used to scan for open ports. It is highly recommended to consult your local laws, and information regarding remote port scanning before using this software.

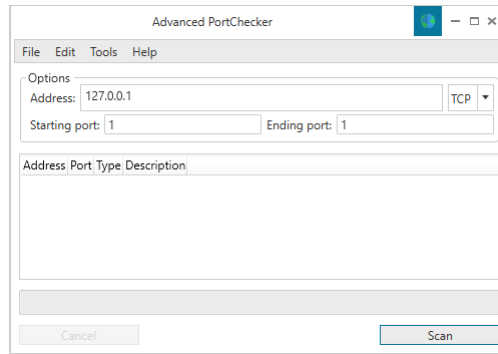
Please read the following statement carefully:

CodeDead.com, and its contributors assume no responsibility for errors or omissions in the software or documentation available from the CodeDead.com web site.

In no event shall CodeDead.com and its contributors be liable to you or any third parties for any special, punitive, incidental, indirect or consequential damages of any kind, or any damages whatsoever, including, without limitation, those resulting from loss of use, data or profits, whether or not CodeDead.com, or its contributors have been advised of the possibility of such damages, and on any theory of liability, arising out of or in connection with the use of this software.

The use of the software downloaded through the CodeDead.com site is done at your own discretion and risk and with agreement that you will be solely responsible for any damage to your or other computer systems or loss of data that results from such activities. No advice or information, whether oral or written, obtained by you from CodeDead.com, its website, or its contributors shall create any warranty for the software.

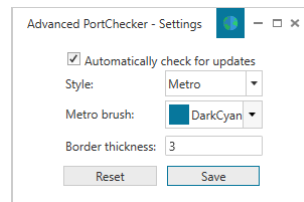
## 7. General functionality



Advanced PortChecker can be used to identify which ports are open for connections, on a local or remote address. It is highly recommended that you get the approval of a remote network address before scanning this address.

You can scan both TCP and UDP ports to check if they allow connections. It's also possible to scan both TCP and UDP ports at the same time! Real-time scanning information will be displayed in the graphical user interface.

### 7.2 Settings



The settings menu allows you to change certain GUI options, such as the ability to:

- Change the application style
- Change the metro brush color
- Change the border thickness

You can also disable or enable automatic updates.

## 8. F.A.Q.

### 8.2 I am unable to open the application, what could be wrong?

Please make sure that your system is capable of running Advanced PortChecker by taking a look at the system requirements section of this document. It is very important to have the latest version of the .NET Framework installed on your machine. For this application, we require at least the .NET Framework v4.7.

### 8.3 The application crashed, what can I do?

It is certainly not intended to crash! If it does happen, please send us an e-mail with details about the crash such as:

- What action makes it crash
- A screenshot
- Your system specifications

### 8.4 How much does Advanced PortChecker cost?

Nothing! It's absolutely free. If you paid for it, you should ask for your money back. The official site for Advanced PortChecker is:

<http://codeload.com/>

### 8.5 Where can I download Advanced PortChecker?

You can download it on the official website:

<http://codeload.com/>

### 8.6 How can I contact the developers if I have a question or need support?

You can contact us by filling in the form on our website:

[http://codeload.com/?page\\_id=145](http://codeload.com/?page_id=145)

### 8.7 Can I take a look at the source code behind Advanced PortChecker?

Absolutely. Advanced PortChecker is an open-source tool. You can find the source code on GitHub:

<https://github.com/CodeDead/Advanced-PortChecker>

### 8.8 Why does my antivirus warn me about Advanced PortChecker?

It's possible that your antivirus falsely identifies our software as malware. This is known as a false positive. If this happens, please contact your antivirus support service in order to unblock Advanced PortChecker.

Alternatively, you could also add an exception to your antivirus filter for Advanced PortChecker if this is supported by your antivirus solution.