



11-5-2019

# Advanced PassGen

Help documentation



DeadLine  
CODEDEAD

## Table of contents

|   |   |
|---|---|
| 1. Introduction.....  | 2 |
| 1.2 Notes .....   | 2 |
| 2. System requirements .....  | 2 |
| 3. License .....  | 2 |
| 4. Support .....  | 2 |
| 5. Website .....  | 2 |
| 6. General warning .....  | 3 |
| 7. General functionality.....   | 4 |
| 7.2 Password generator .....  | 5 |
| 7.3 Advisor.....  | 6 |
| 7.4 Settings.....   | 6 |
| 8. F.A.Q. ....  | 8 |
| 8.2 Why can't I open Advanced PassGen? .....                            | 8 |
| 8.3 Can I take a look at the source code behind Advanced PassGen? ..... | 8 |
| 8.4 How much does this application cost? .....                          | 8 |
| 8.5 What is the official website of Advanced PassGen? .....             | 8 |
| 8.6 The application crashed, what can I do?.....                        | 8 |
| 8.7 Can I make any suggestions?.....                                    | 8 |
| 8.8 Why does my antivirus warn me about Advanced PassGen? .....         | 8 |
| 8.9 How can I donate?.....  | 8 |
| 9. Image list .....   | 9 |

## 1. Introduction

Advanced PassGen is a free and open-source application that can help you generate passwords and export them. You can export your passwords in TXT, HTML, CSV or Excel format!

### 1.2 Notes

All images used by this software were created by:

paomedia – Small & Flat

<https://github.com/paomedia>

The theme was created by Syncfusion:

<https://www.syncfusion.com/>

## 2. System requirements

|                            |  |
|----------------------------|--|
| <b>Operating System</b>    | Windows 7 SP1 (x86 and x64), Windows 8.1 (x86 and x64), Windows 10 (x86 and x64), Windows Server 2008 R2 SP1 (x64), Windows Server 2012 (x64), Windows Server 2012 R2 (x64), Windows Server 2016 (x64) |
| <b>Disk space</b>          | At least 40 MB disk space  |
| <b>RAM Memory</b>          | At least 50 MB RAM memory  |
| <b>Internet connection</b> | Required in order to check for updates. This function can be turned off.   |
| <b>.NET Framework</b>      | <a href="#">.NET Framework 4.8</a>   |

## 3. License

[Advanced PassGen is licensed under the GNU GENERAL PUBLIC LICENSE.](#)

## 4. Support

If you need support, feel free to fill out the contact form on our website:

[https://codedead.com/?page\\_id=145](https://codedead.com/?page_id=145)

Please add a screenshot of your issue if possible.

## 5. Website

You can find us on the web by clicking on the link below:

<https://codedead.com>

## 6. General warning

Please read the following statement carefully:

CodeDead.com, and its contributors assume no responsibility for errors or omissions in the software or documentation available from the CodeDead.com web site.

In no event shall CodeDead.com and its contributors be liable to you or any third parties for any special, punitive, incidental, indirect or consequential damages of any kind, or any damages whatsoever, including, without limitation, those resulting from loss of use, data or profits, whether or not CodeDead.com, or its contributors have been advised of the possibility of such damages, and on any theory of liability, arising out of or in connection with the use of this software.

The use of the software downloaded through the CodeDead.com site is done at your own discretion and risk and with agreement that you will be solely responsible for any damage to your or other computer systems or loss of data that results from such activities. No advice or information, whether oral or written, obtained by you from CodeDead.com, its website, or its contributors shall create any warranty for the software.

## 7. General functionality

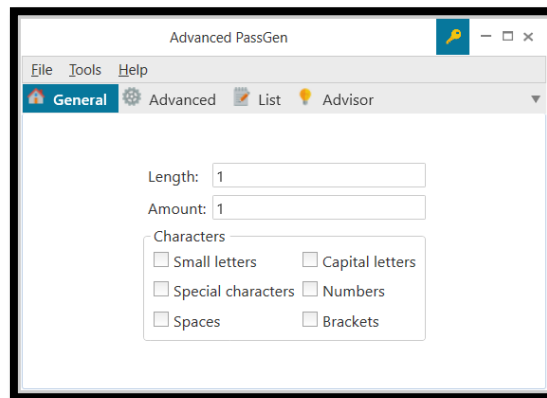


Figure 1 Main window

Easily generate thousands of passwords using the options that are available in Advanced PassGen. You can even go so far as to define your own character set that Advanced PassGen can use to generate passwords!

Want a different theme or would you like to disable automatic updates? Don't want to export a certain field? It's all possible, thanks to our intuitive and easy to use GUI.

Advanced PassGen can export any and all data that it generates for you in a couple of different formats including: HTML, CSV, Excel and of course plain text. A simple copy is also available!

Advanced PassGen will automatically notify you if there's a new version available so that you'll always be the first to enjoy the latest and greatest features. Also, keep an eye on [our blog](#)!

## 7.2 Password generator

The password generator can be adjusted to generate any kind of password. You can select whether or not you want to include

- Small letters
- Capital letters
- Special characters
- Numbers
- Spaces
- Brackets

You can use the advanced options to go even further. You can, for example, set the minimum and maximum length of a password, use your own custom character set and convert passwords to the base64 format. Using a random seed can be useful if you're trying to maximize the randomness of your passwords.

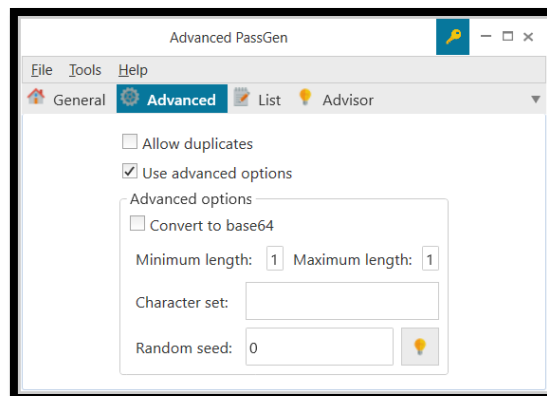


Figure 2 Advanced generation settings

When you're satisfied with the options that you've selected, you can generate your passwords by clicking the appropriate 'Generate' button in the 'List' tab:

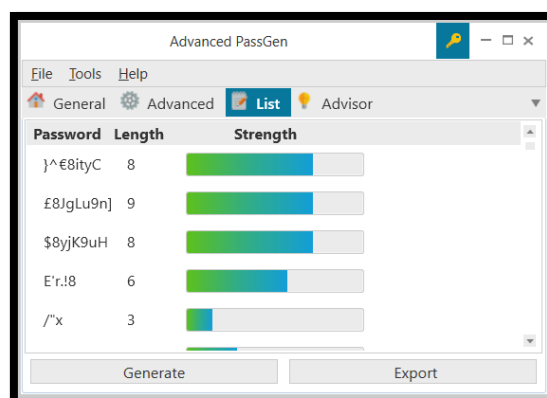


Figure 3 Generated passwords

You can now export these password by clicking the export button in any of the following formats:

- Text
- HTML
- CSV (including the Excel delimiter)

### 7.3 Advisor

The Advisor is a tool that was included in Advanced PassGen that can help determine the strength of a password. If, for example, you want to know how strong a specific password is that you've come up with yourself, you can try this feature out. Anything you enter here does not get stored anywhere. The strength of the password is calculated locally and the text you type is hidden.

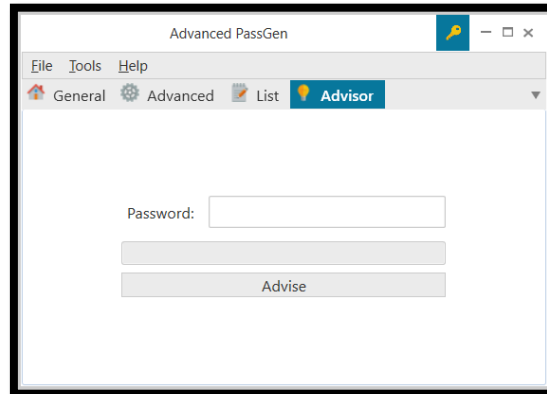


Figure 4 Advisor

### 7.4 Settings

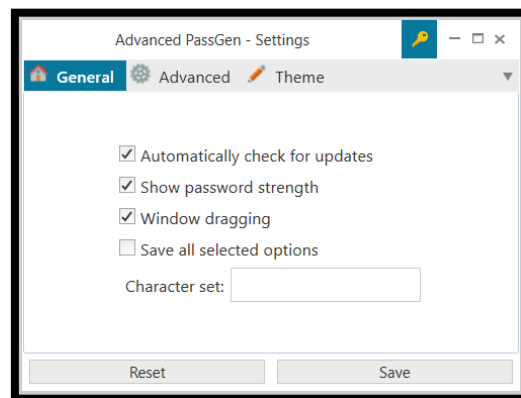


Figure 5 General settings

Advanced PassGen offers various settings that you can customize to make it behave the way you want. In the general options you can modify the following settings:

- Turn automatic updates on or off
- Set whether the password strength should be displayed
- Enable or disable draggable windows by clicking anywhere on a window
- Set whether you want to save all options that you've set or not in the main window
- Save a custom character set for future password generation runs

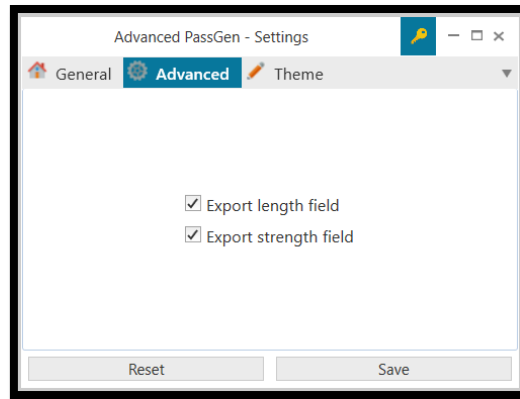


Figure 6 Advanced settings

In the 'Advanced' tab you can customize the fields that get exported such as:

- The length of the passwords
- The strength of the passwords

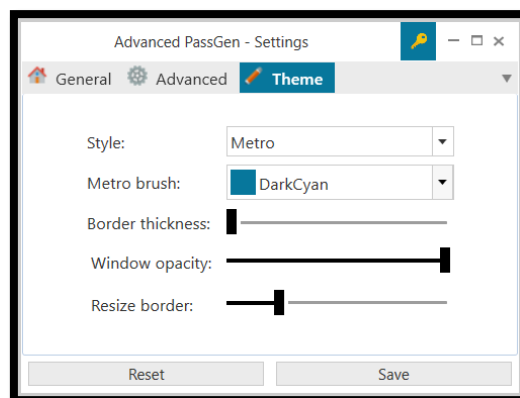


Figure 7 Theme settings

You can also customize the appearance of Advanced PassGen in the 'Theme' settings. In here, you have the ability to:

- Change the general theme
- Change the color of the metro brush
- Change the border thickness
- Change the window opacity
- Change the resize border



## 8. F.A.Q.

### 8.2 Why can't I open Advanced PassGen?

Please make sure that you have the .NET Framework installed on your machine. You need at least [.NET Framework 4.8](#) in order to run Advanced PassGen.

### 8.3 Can I take a look at the source code behind Advanced PassGen?

Advanced PassGen is completely open-source! You can find the source code here: <https://github.com/CodeDead/Advanced-PassGen>

### 8.4 How much does this application cost?

Absolutely nothing! It's free, granted you follow the conditions that are stated in the license of Advanced PassGen. If you happen to have paid for this application, we suggest that you ask your money back as soon as possible!

### 8.5 What is the official website of Advanced PassGen?

All of the applications created by CodeDead are hosted on <https://codedead.com>

### 8.6 The application crashed, what can I do?

it is certainly not intended to crash! If it does happen, please collect as many details about the crash as you can, such as:

- What action makes it crash
- A screenshot
- Your system specifications
- The application logs, if possible
- RAM Analyzer data, if possible

You can contact us [via email](#) or fill in a bug report on GitHub:

<https://github.com/CodeDead/Advanced-PassGen/issues>

### 8.7 Can I make any suggestions?

Of course, we're open to all kind of suggestions and feature requests. If possible, please fill out the feature request form here:

<https://github.com/CodeDead/Advanced-PassGen/issues/new/choose>

### 8.8 Why does my antivirus warn me about Advanced PassGen?

It's possible that your antivirus falsely identifies our software as malware. This is known as a false positive. If this happens, please contact your antivirus support service in order to unblock Advanced PassGen.

Alternatively, you could also add an exception to your antivirus filter for Advanced PassGen if this is supported by your antivirus solution.

### 8.9 How can I donate?

You can donate by following the instructions placed on the page below:

[https://codedead.com/?page\\_id=302](https://codedead.com/?page_id=302)

## 9. Image list

|   |   |
|---|---|
| Figure 1 Main window .....                  | 4 |
| Figure 2 Advanced generation settings ..... | 5 |
| Figure 3 Generated passwords .....          | 5 |
| Figure 4 Advisor .....                      | 6 |
| Figure 5 General settings .....             | 6 |
| Figure 6 Advanced settings .....            | 7 |
| Figure 7 Theme settings .....               | 7 |