



7-5-2019

# Advanced PortChecker

Help documentation



DeadLine  
CODEDEAD

## Table of contents

1. Introduction.....	2
1.2 Notes .....	2
2. System requirements .....	2
3. License .....	2
4. Support .....	2
5. Website .....	2
6. General warning .....	3
7. General functionality.....	4
7.2 Settings.....	5
8. F.A.Q. ....	6
8.2 I am unable to open the application, what could be wrong? .....	6
8.3 The application crashed, what can I do?.....	6
8.4 How much does Advanced PortChecker cost?.....	6
8.5 Where can I download Advanced PortChecker?.....	6
8.6 How can I contact the developers if I have a question or need support? .....	6
8.7 Can I take a look at the source code behind Advanced PortChecker?.....	6
8.8 Why does my antivirus warn me about Advanced PortChecker? .....	6
9. Figure list .....	7

## 1. Introduction

Advanced PortChecker was created by DeadLine. This software can be used to determine whether a certain TCP/IP port is open for connections. This software was and will always be, available free of charge. This software is not intended for malicious use. Make sure that you have permission before scanning a certain IP address!

### 1.2 Notes

All images used by Advanced PortChecker were created by:

paomedia – Small & Flat

<https://github.com/paomedia>

The theme was created by Syncfusion:

<https://www.syncfusion.com/>

## 2. System requirements

<b>Operating System</b>	Windows 7 SP1 (x86 and x64), Windows 8.1 (x86 and x64), Windows 10 (x86 and x64), Windows Server 2008 R2 SP1 (x64), Windows Server 2012 (x64), Windows Server 2012 R2 (x64), Windows Server 2016 (x64)
<b>Disk space</b>	At least 40 MB disk space
<b>RAM Memory</b>	At least 80 MB RAM memory
<b>Internet connection</b>	Required in order to check for updates. This function can be turned off.
<b>.NET Framework</b>	<a href="#">.NET Framework 4.8</a>

## 3. License

[Advanced PortChecker is licensed under the GNU GENERAL PUBLIC LICENSE.](#)

## 4. Support

If you need support, feel free to fill out the contact form on our website:

[https://codedead.com/?page\\_id=145](https://codedead.com/?page_id=145)

Please add a screenshot of your issue if possible.

## 5. Website

You can find us on the web by clicking on the link below:

<https://codedead.com>

## 6. General warning

Advanced PortChecker can be used to scan for open ports. It is highly recommended to consult your local laws and information regarding remote port scanning (if applicable) before using this software.

Please read the following statement carefully:

CodeDead.com, and its contributors assume no responsibility for errors or omissions in the software or documentation available from the CodeDead.com web site.

In no event shall CodeDead.com and its contributors be liable to you or any third parties for any special, punitive, incidental, indirect or consequential damages of any kind, or any damages whatsoever, including, without limitation, those resulting from loss of use, data or profits, whether or not CodeDead.com, or its contributors have been advised of the possibility of such damages, and on any theory of liability, arising out of or in connection with the use of this software.

The use of the software downloaded through the CodeDead.com site is done at your own discretion and risk and with agreement that you will be solely responsible for any damage to your or other computer systems or loss of data that results from such activities. No advice or information, whether oral or written, obtained by you from CodeDead.com, its website, or its contributors shall create any warranty for the software.

## 7. General functionality

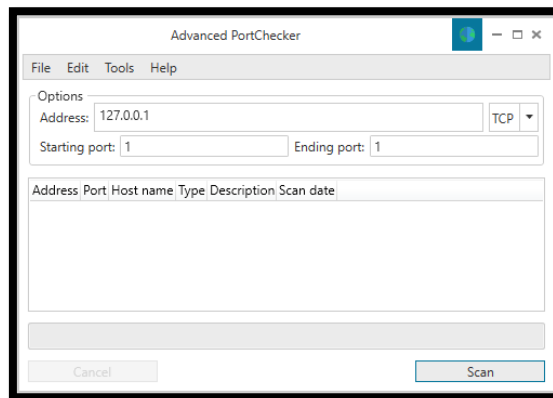


Figure 1 Main window

Advanced PortChecker can be used to identify which ports are open for connections on a local or remote address. It is highly recommended that you get the approval of a remote network address before scanning this address.

You can scan both TCP and UDP ports to check if they allow connections. It's also possible to scan both TCP and UDP ports at the same time! Real-time scanning information will be displayed in the graphical user interface. If resolvable, the host name will also be displayed in the user interface.

The result of a port scan can be exported in the following formats:

- Text
- HTML
- CSV
- CSV (Excel delimiter)
- A scan result can also be copied to the clipboard.

The UDP port scanning method that is implemented by Advanced PortChecker is generally not indicative of an open/closed port. This is because Advanced PortChecker sends a random set of bytes to the given port using UDP. The server may choose to ignore these packets and not send a response at all, which Advanced PortChecker will indicate as a closed port, while it could be open. This is also why performing the same scan multiple times might give different results, in combination with the way UDP works.

## 7.2 Settings

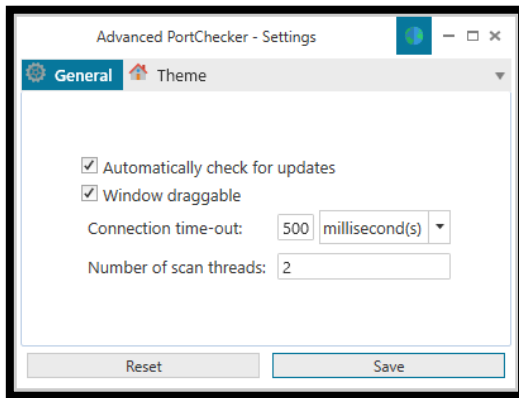


Figure 2 General settings

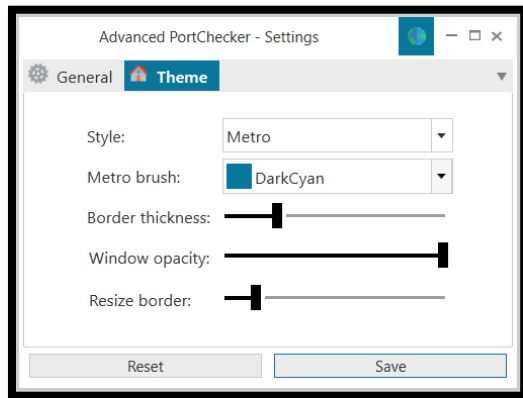


Figure 3 Theme settings

Advanced PortChecker offers a set of features that can be tweaked. Automatic updates, for example, can be turned off but keep in mind that doing so will prevent you from receiving a notification if a new version is available. You will have to perform update checks manually in order to know whether or not a new version is available.

The connection time-out setting can be used to speed up or slow down port scanning. Your system will determine that a port is closed after the time-out limit has been reached and no connection could be established. Please note that setting the connection time-out too low might also cause Advanced PortChecker to falsely indicate that a port is closed.

Advanced PortChecker can also work multithreaded. This means that the ports that need to be scanned will be divided among the given set of threads. Scanning using multiple threads can significantly reduce the amount of time it takes to perform a port scan. Please note that using too many threads to perform a scan can negatively impact the performance of the application and even your system!

The theme settings allow you to change certain GUI options, such as the ability to:

- Change the application style
- Change the metro brush color
- Change the border thickness
- Change the window opacity
- Change the window resize border

## 8. F.A.Q.

### 8.2 I am unable to open the application, what could be wrong?

Please make sure that your system is capable of running Advanced PortChecker by taking a look at the system requirements section of this document. It is very important to have the latest version of the .NET Framework installed on your machine. For this application, we require at least the .NET Framework 4.8 to be installed.

### 8.3 The application crashed, what can I do?

It is certainly not intended to crash! If it does happen, please send us an e-mail with details about the crash such as:

- What action makes it crash
- A screenshot
- Your system specifications

### 8.4 How much does Advanced PortChecker cost?

Nothing! It's absolutely free. If you paid for it, you should ask for your money back. The official site for Advanced PortChecker is:

<https://codedead.com/>

### 8.5 Where can I download Advanced PortChecker?

You can download it on the official website:

<https://codedead.com/>

### 8.6 How can I contact the developers if I have a question or need support?

You can contact us by filling in the form on our website:

[https://codedead.com/?page\\_id=145](https://codedead.com/?page_id=145)

### 8.7 Can I take a look at the source code behind Advanced PortChecker?

Absolutely. Advanced PortChecker is an open-source tool. You can find the source code on GitHub:

<https://github.com/CodeDead/Advanced-PortChecker>

### 8.8 Why does my antivirus warn me about Advanced PortChecker?

It's possible that your antivirus falsely identifies our software as malware. This is known as a false positive. If this happens, please contact your antivirus support service in order to unblock Advanced PortChecker.

Alternatively, you could also add an exception to your antivirus filter for Advanced PortChecker if this is supported by your antivirus solution.

## 9. Figure list

Figure 1 Main window .....	4
Figure 2 General settings.....	5
Figure 3 Theme settings .....	5